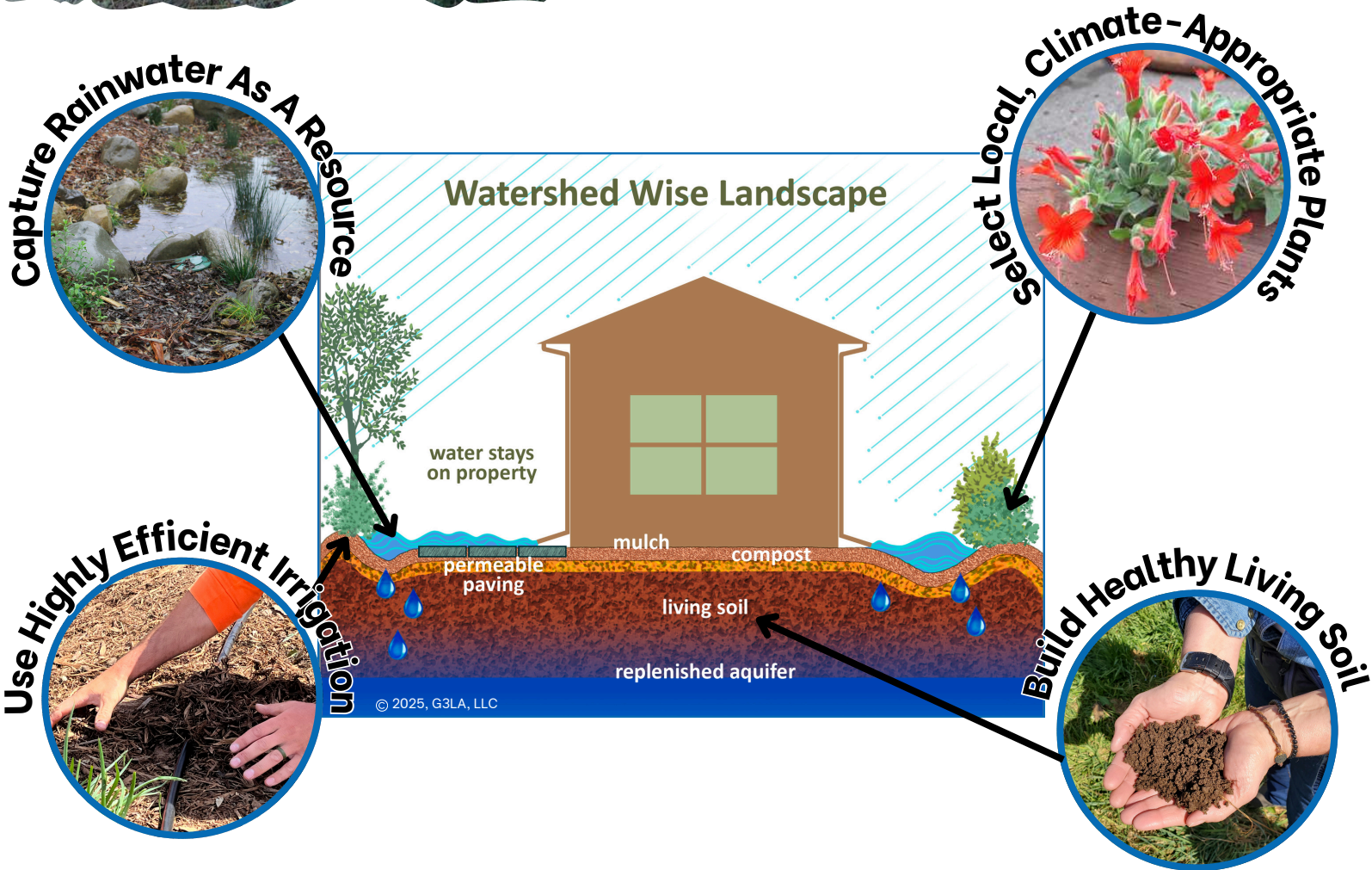
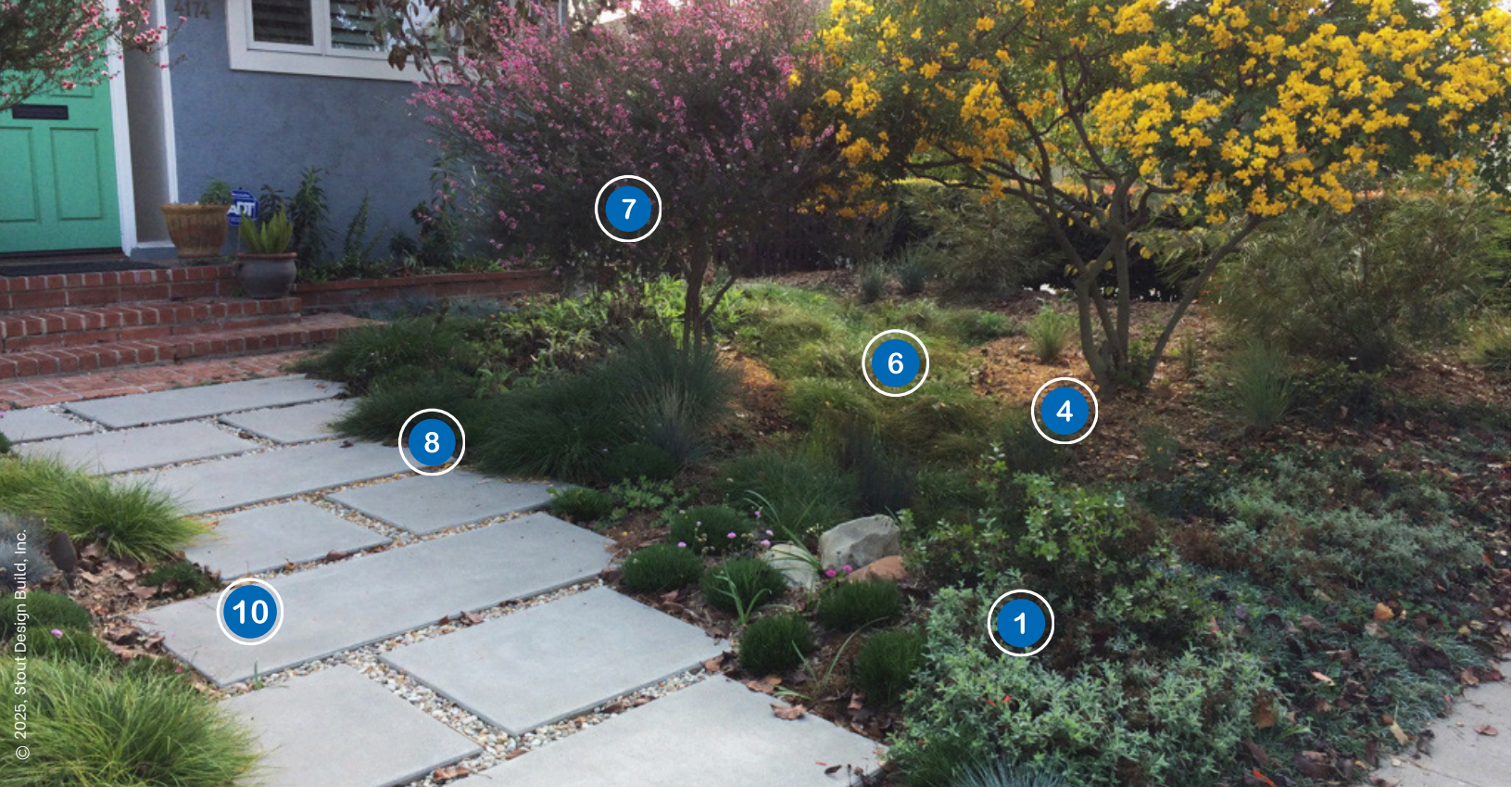


# Casitas Municipal Water District WATERSHED APPROACH TO LANDSCAPING



These beautiful, water-efficient gardens stay vibrant and evergreen year-round! Design your property as a mini-watershed by following four principles: **Capturing rainwater, Focusing on soil, Choosing climate-appropriate plants, and Using supplemental irrigation wisely.** These abundant landscapes beautify properties, unite neighborhoods, and promote a cooler, more enjoyable climate.

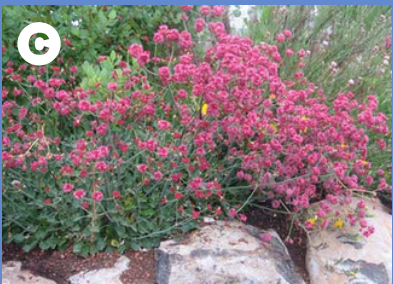
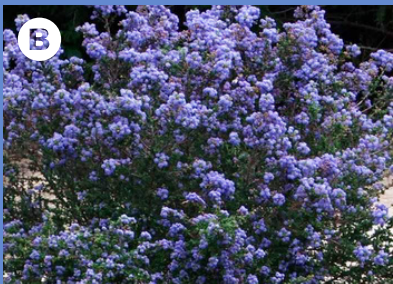




© 2025, Stout Design Build, Inc.

See page 3 for corresponding numbered tips for climate-appropriate landscapes.

## Watershed Wise Plants for Every Garden



- A** *Prunus ilicifolia* ssp. *lyonii*  
Catalina Cherry
- B** *Ceanothus* 'Joyce Coulter'  
CA Lilac 'Joyce Coulter'
- C** *Eriogonum grande* var. *rubescens*  
San Miguel Buckwheat
- D** *Achillea millefolium*  
Yarrow
- E** *Muhlenbergia rigens*  
Deer Grass

California native plants have evolved over time to thrive in our unique and varied Mediterranean climate and are adapted to the hot dry summers with cool wet winters. Left on their own, these plants arrange themselves into communities of their friends based on common microclimates, and interactions with each other, with insects, birds, and other animals, and with the physical environment. Learn more about selecting local native plants at [VenturaCountyGardening.com](http://VenturaCountyGardening.com).

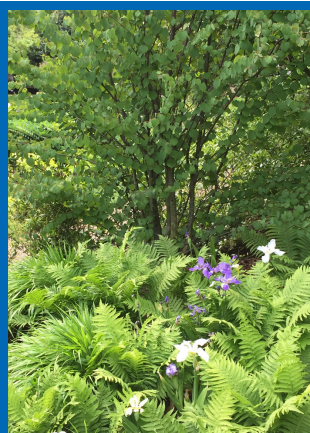
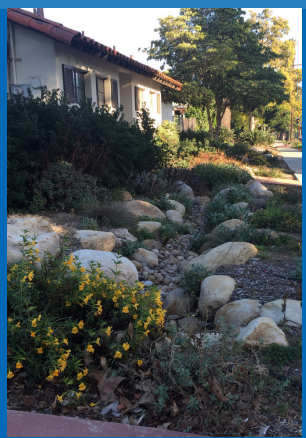


© 2025 G3LA, LLC

## RAIN CHAINS

## RAIN GARDENS

## SWALES



## GRASS & TURF ALTERNATIVES

# Ten Tips for Climate-Appropriate Landscapes

- 1 Select California Native Plants** adapted to the local environment to support its wildlife.
- 2 Group Plants into Hydrozones** based on similar watering needs.
- 3 Feed Your Soil Organic Matter** to improve water holding capacity.
- 4 Mulch, Mulch, Mulch**, at least 3" thick with ground leaves and bark. Keep the mulch 1-1 1/2" inch in size for quick decomposition.
- 5 Redirect Downspouts** into the landscape with rainchains and rain gardens that slow the flow.
- 6 Contour with Swales and Berms** to keep rain on site and direct it into the rootzone of plants.
- 7 Limit Pruning** to provide essential habitat for insects, birds, and other local life.
- 8 Experiment with Walkable Groundcovers** and other lawn alternatives.
- 9 Change Spray to Drip Irrigation** that slowly delivers water to the roots of plants and reduces wasteful evaporation and runoff.
- 10 Invite People** into the landscape with permeable paths and places to explore.

# Contour for Rain SLOW, SPREAD, & SINK WATER

Down Spout Redirect

Swale

Berm

Native Plants

Mulching

Weather-Based Irrigation Controller

Hand Water

Low Flow Valves

Drip Irrigation

But when you need more water, use **EFFICIENT IRRIGATION**